

Monoclonal Antibody SD67-41

Catalog Number: SD-3 (Ascites)

Volumes available: 0.5 ml, 1.0 ml

Lot: 1407292

Isotype: IgM, kappa

Specificity: Porcine Epidemic Diarrhea Virus S1 protein

Applications: Intended for research purposes only; Immunofluorescence (IFA), detects linear epitopes of recombinant protein on Western Blot (WB)

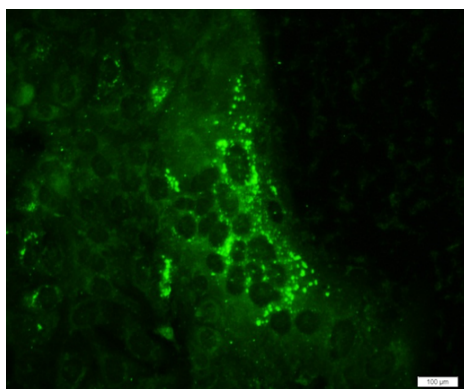
Recommended Dilutions: User should titrate for their own applications. Recommended starting dilution is 1:25 for IFA and 1:50 for WB.

Immunogen: Mice were immunized with recombinant S1-protein from a PEDV US isolate produced in *E. coli*.

Format: Ascites fluid

Storage: Aliquot and store at -20C for up to one year after receipt. Store working solutions at 4C for up to 1 month.

Description: Porcine Epidemic Diarrhea Virus (PEDV) is a highly contagious coronavirus of swine, causing diarrhea, vomiting, and severe dehydration in suckling pigs. It has reported mortality rates of up to 100 percent. The S protein of PEDV is an important site of viral neutralization.



Immunofluorescence of PEDV-infected cells

medgene
LABS

IMMUNOLOGICAL SERVICES PROVIDER™

Precision, protection.

www.MedgeneLabs.com